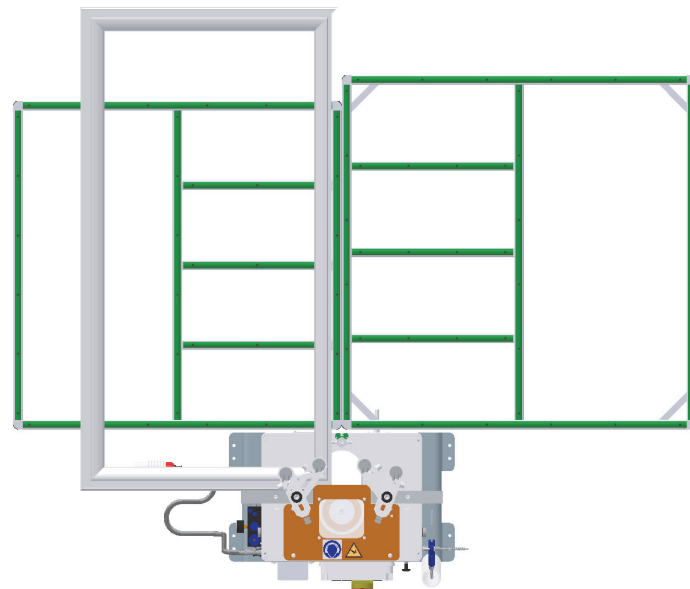
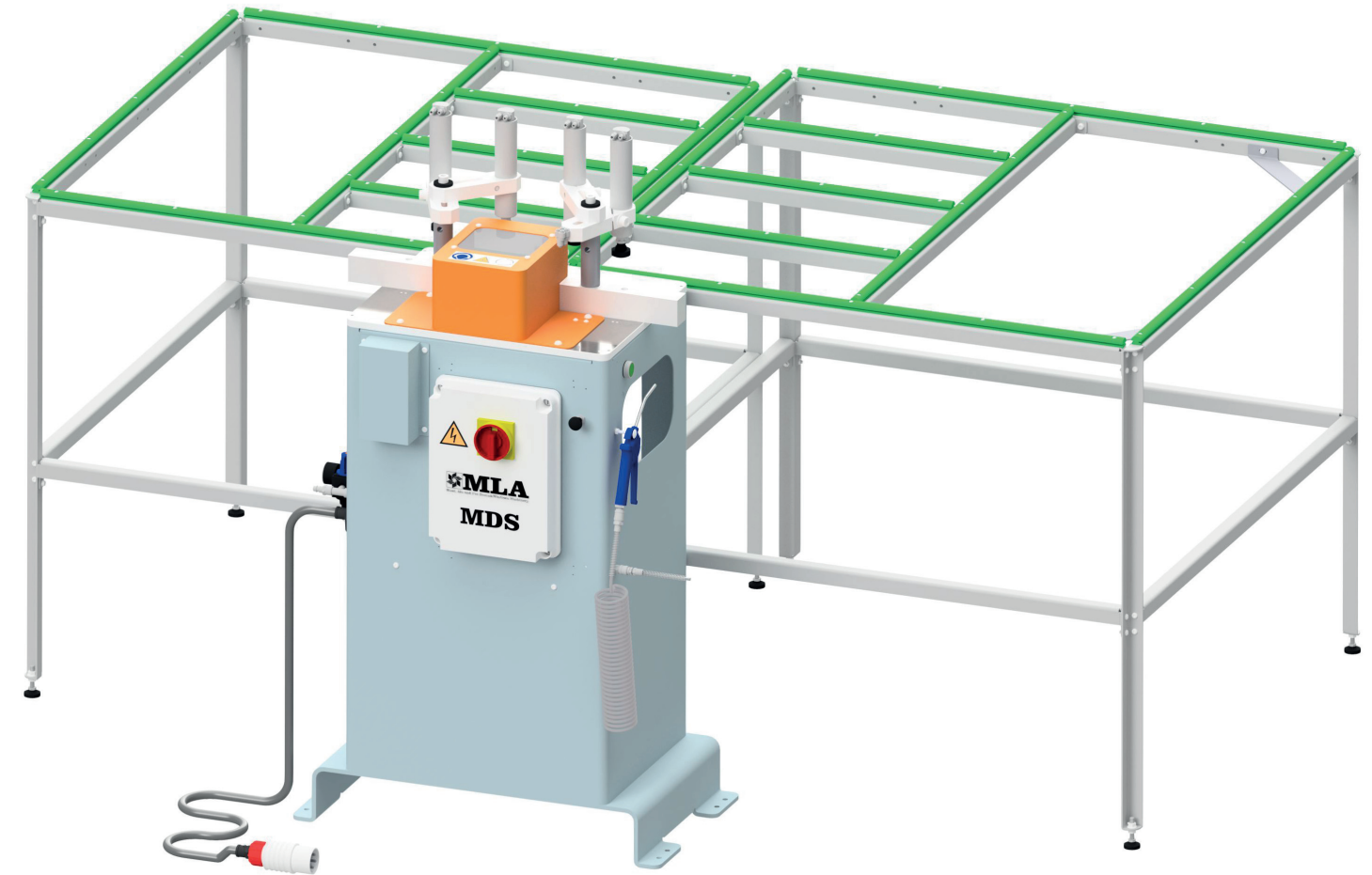


**MDS** takes up little space: the two optional tables overlap each other and, in turn, they overlap the machine.



View from above

**Semi-automatic milling machine to mill out the central section of the slave sash**

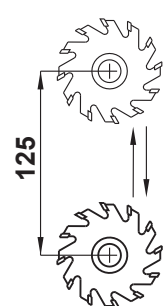


CE

Code 101DS+502565V1



1,1 KW  
2.800rpm



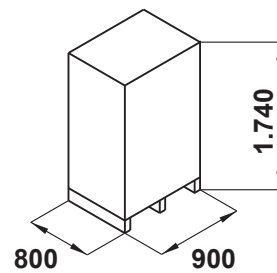
3+T+N  
400 Volt



6÷8 Bar



113+40  
kg



The Company reserves the right to amend and improve its products without notice.

The milling machine **MDS** is conceived to mill out the central section of the slave sash on pvc doors and windows.

A pair of optional tables (code 502610V1) makes the movement of the sash easier.

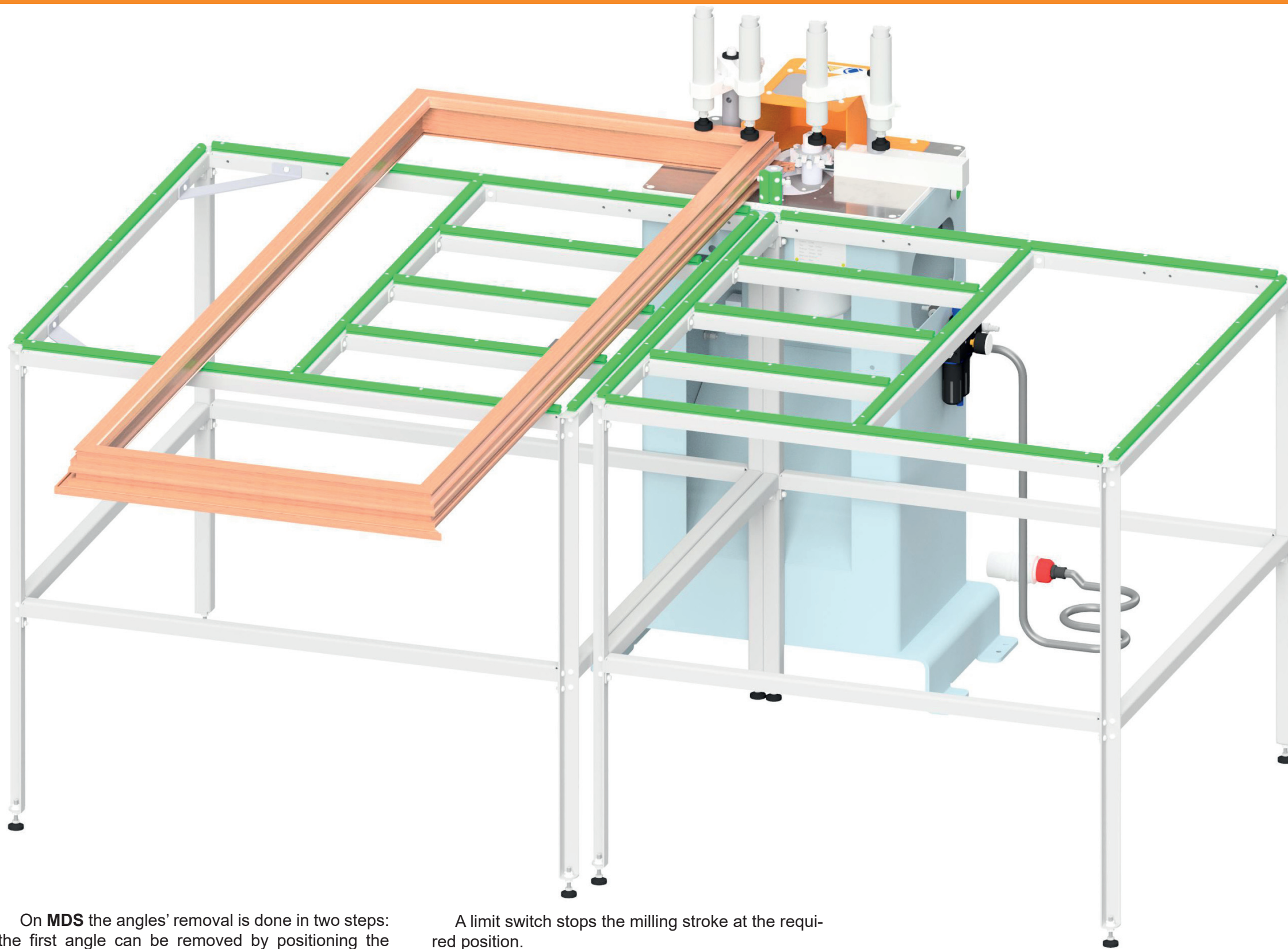
By keeping a frontal position, the operator will be able to work the sash both on the left and on the right.

**MDS** is equipped with a **certified bimanual device** (EN574-3A).

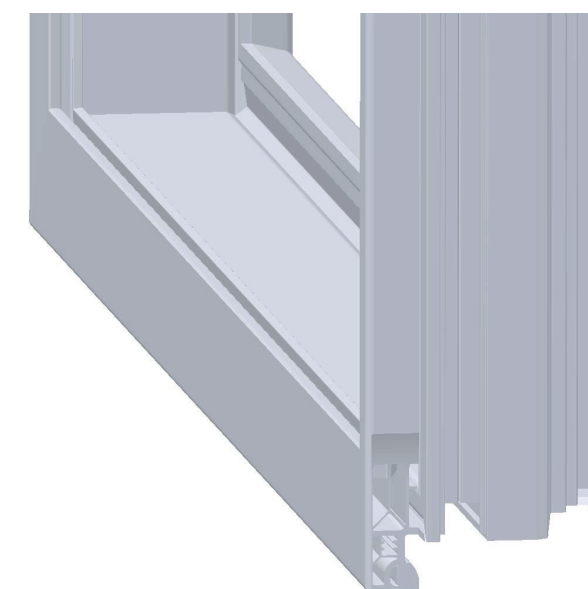
The **sliding shoes/guides** on recirculating balls and the forwarding by means of an **oil-pneumatic cylinder** make the milling smooth and constant.

The viewing window on top of the protection is made of scratch-resistant polycarbonate and ensures a perfect view of the working area throughout the years.

The nickel-clad, ground and polished work surface guarantees perfect smoothness and scratch resistance.



A kit of high/low pressure cylinders with 30mm stroke (code 502629) is available as an option.



Machining example

On **MDS** the angles' removal is done in two steps: the first angle can be removed by positioning the sash on the left; then the second one can be milled by placing the sash on the right.

By pushing the switch on the right of the electric board, the sash is clamped at high pressure with short-stroke cylinders.

By pushing the opposing bimanual buttons, the motor starts rotating and the milling cycle begins.

A limit switch stops the milling stroke at the required position.

At the same time, the milling rotation ends and the milling unit returns to rest position; by pulling the switch, the sash is unclamped.

The motor is provided with an integrated **holding brake**, which brings the rotation to a halt instantly.